

# AGROPLUS F Keyline



DEUTZ-FAHR  
AGROPLUS F Keyline  
55 - 65 - 75 - 80.4







**AGROPLUS F KEYLINE.  
GREAT EQUIPMENT  
AT A SMALL PRICE.**





In the fruit growing sector too, the mechanisation of labour-intensive working procedures is the key to increasing productivity and making businesses more competitive.

With the Agroplus F Keyline, DEUTZ-FAHR offers the ideal specialist tractor for fruit-growing businesses that are now looking for greater mechanisation. The Agroplus F Keyline series consists of four very attractive models ranging from 55 - 75 HP. With a level of driving comfort and operating convenience that is exemplary in this category, three or four-cylinder engines with turbo or turbo intercooler, four or five-speed gearboxes for maximum speed of up to 40 Km/h, a unique front axle and braking concept, four-wheel drive and 3050 kg rear lifting capacity for the STANDARD version, the Agroplus F Keyline not only delivers a wide choice of equipment at a competitive price, but is the ideal tractor for any specialised operation.

<b>AGROPLUS F Keyline</b>	<b>55</b>	<b>65</b>	<b>75</b>	<b>80.4</b>
Cylinders / Displacement (cc)	3/3000	3/3000	3/3000	4/4000
Max. power (@2000 rpm) (kW/HP)	40,5/55	45,6/62	53/72	55/75
Rear lifting capacity (STANDARD version) (kg)	3050	3050	3050	3050
Rear lifting capacity (COMPACT version) (kg)	2700	2700	2700	2700
Weight (kg)	2200	2200	2200	2300





DRIVER'S PLATFORM.  
GET IN, DRIVE OFF  
AND FEEL GOOD.



Driver seat and seating position extremely comfortable.



InfoCenter. All operating information at the glance.



All controls are clearly color coded...

When it comes to the driver's well being, you should not make any compromises. The following can therefore be said for all Agropius F Keyline models: Get in, drive off and feel good. For a long working day and more.

The driver's seat and seating position are extremely comfortable. All of the operating and driving data is put together clearly on the info-centre behind the steering wheel. The driver can constantly have an eye on everything. The controls are easily to hand, arranged logically according to how often they are used and clearly colour coded. This guarantees largely error-free operation, even when working hours surpass the normal levels.



...and arranged conveniently around the driver seat.

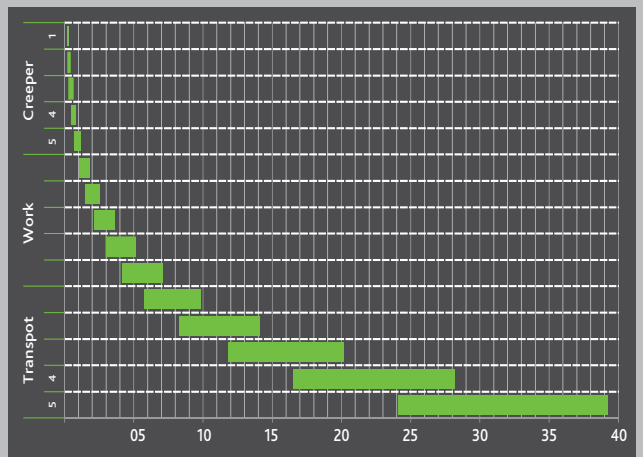


06-07  
▶ ENGINE  
TRANSMISSION  
BRAKE

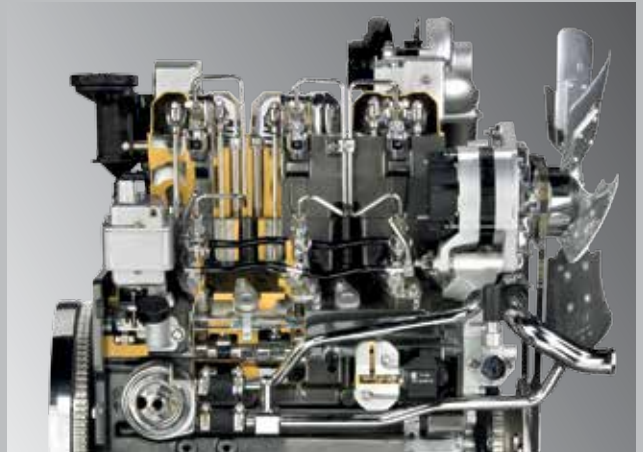


**POWER, EFFICIENCY AND  
SAFETY FROM 55 – 75 HP.**





Latest transmission technology up to a five-speed gearbox with creeper.



Driven by high torque and economic SDF 1000 Tier3 engine.



Front axle. Rugged and durable both in the field and on the road.

The Agropius F Keyline models are driven by the high-torque and economic SDF Series 1000 Tier3 engines with turbocharger or intercooling. With injection pressures of 1200 bar, they delivery maximum power at 2200 rpm. Maximum torque is reached at 1400 rpm (Model 55) or 1600 rpm (Models 65/75/80.4). With a torque increase of 21 % (Models 55/65), 19 % (Model 80.4) and 15 % (Model 75).

For the efficient transfer of power, there is a choice of three mechanical reverse shuttle options. From the simple two-range, four-speed gearbox (8+8) or five-speed gearbox (10+10) through to the three-range, five-speed gearbox with creeper (15+15).

The Agropius F Keyline is equipped with a front axle that offers 1800 kg permitted total weight, differential with a 100 % lock, wet disc brakes and 55° steering lock angle.

All Agropius F Keyline models are equipped with four-wheel brakes and separate brake valve, which smoothly distributes the braking power to the front and rear axle. This results in effective braking and maximum safety. The conventional parking brake is also part of the standard equipment. A hydraulic trailer brake is optionally available.



08-09  
▶ LIFT  
HYDRAULIC  
PTO



REAR ATTACHMENT AREA.  
EQUIPPED FOR EVERY JOB.





Only the perfect attachment area makes the tractor a highly efficient and universal work appliance (tool). DEUTZ-FAHR has been well known for many years for rear lifts with ultimate precision, simple controls and maximum efficiency. For the Agroplus F Keyline models, two different rear lift capacities are available. The STANDARD version, with 3050 kg lifting capacity, and a COMPACT version up to 2700 kg lifting capacity. The lifting control mechanism significantly increases precision when working implements



PTO engagement for 540 or 540/540ECO.



Easy and precise to handle 3050 kg lifting capacity.



Equipped with up to 3 mechanical auxiliary valves.

The hydraulic pump supplies four to six mechanically controlled couplings at 42L/min. For the steering, there is an independent pump at 18 L/min. You can even choose when it comes to the PTO options. Choose between the 540 or the 540/540ECO version. They are controlled mechanically using a dry clutch. The Agroplus F Keyline can also be supplied with a ground speed PTO. The Agroplus F Keyline is ideally equipped for all jobs and is able to make a crucial contribution to the growth of your business.

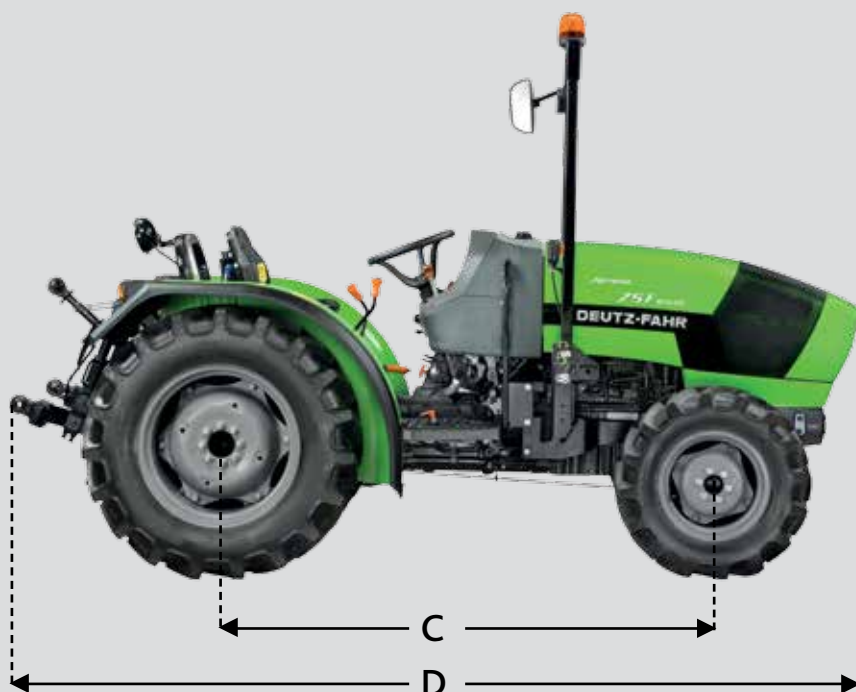


Technical data		AGROPLUS F KEYLINE			
		55	65	75	80.4
<b>ENGINE</b>					
Manufacturer		SDF	SDF	SDF	SDF
Model		1000.3	1000.3	1000.3	1000.4
Emissions		Tier3	Tier3	Tier3	Tier3
Cylinders/Displacement	n°/cc	3/3000	3/3000	3/3000	4/4000
Pump-injector		Direct	Direct	Direct	Direct
Turbo		●	●	-	-
Turbo intercooler		-	-	●	●
Max. power (ECE R120)	kW/HP	40.5/55	45.6/62	53/72	55/75
Max. power engine speed	rpm	2200	2200	2200	2200
Power at rated engine speed (ECE R120)	kW/HP	40.5/55	45.6/62	53/72	55/75
Rated speed	rpm	2200	2200	2200	2200
Max. torque	Nm	213	240	265	285
Engine speed at maximum torque	rpm	1400	1600	1600	1600
Torque rise	%	21	21	15	19
Mechanical engine control		●	●	●	●
Under-hood silencer with side exhaust		●	●	●	●
Exhaust gas after-treatment system		iEGR	iEGR	iEGR	iEGR
Fuel tank capacity	litres	65	65	65	65
<b>SHUTTLE</b>					
Synchronised mechanical reverse shuttle		●	●	●	●
Mechanical clutch		●	●	●	●
<b>MECHANICAL GEARBOX</b>					
Number of speeds	n°	8+8	8+8	8+8	8+8
Number of gears	n°	4	4	4	4
Number of ranges	n°	2	2	2	2
Synchronised ratios		●	●	●	●
Number of speeds	n°	10+10	10+10	10+10	10+10
Number of gears	n°	5	5	5	5
Number of ranges	n°	2	2	2	2
Synchronised ratios		●	●	●	●
Number of speeds with supercreeper gear	n°	15+15	15+15	15+15	15+15
Number of gears	n°	5	5	5	5
Number of ranges	n°	3	3	3	3
Supercreeper gear		●	●	●	●
Minimum speed/minimum speed with supercreeper gear	m/hr	1790/280	1790/280	1790/280	1790/280
<b>REAR PTO</b>					
Dry clutch		●	●	●	●
Mechanical engagement		●	●	●	●
PTO 540		●	●	●	●
PTO 540/540ECO		○	○	○	○
Ground speed PTO		○	○	○	○
<b>FRONT AND REAR AXLE</b>					
Front axle, 4WD		●	●	●	●
100% lockable front/rear differentials		●	●	●	●
<b>BRAKES</b>					
Hydrostatic control		●	●	●	●
Mechanical parking brake		●	●	●	●
Trailer hydraulic braking valve		○	○	○	○
<b>STEERING</b>					
Hydrostatic steering with independent pump		●	●	●	●
Pump output	L/min	18	18	18	18
<b>HITCH</b>					
Mechanical rear hitch control		●	●	●	●
Rear lift capacity (STANDARD version)	kg	3050	3050	3050	3050
Rear lift capacity (COMPACT version)	kg	2700	2700	2700	2700



Technical data		AGROPLUS F KEYLINE			
		55	65	75	80.4
HYDRAULIC SYSTEM					
Open-centre hydraulic circuits		●	●	●	●
Pump output	L/min	42	42	42	42
Mechanical engagement		●	●	●	●
Auxiliary rear hydraulic distributors (std)	n° of ways	4	4	4	4
Auxiliary rear hydraulic distributors (opt)	n° of ways	6	6	6	6
PLATFORM					
Folding roll over protection frame (ROPS)		●	●	●	●
DIMENSIONS AND WEIGHTS					
Standard front tyres		280/70 R16"	280/70 R16"	280/70 R16"	280/70 R16"
Standard rear tyres		360/70 R24"	360/70 R24"	360/70 R24"	360/70 R24"
Maximum front track (A)	mm	1462	1462	1462	1462
Maximum rear track	mm	1466	1466	1466	1466
Width between mudguards	mm	600	600	600	600
Width at mudguards (without extensions)	mm	1120	1120	1120	1120
Total rear width	mm	1466	1466	1466	1466
Total front width	mm	1462	1462	1462	1462
Wheelbase (C)	mm	1996	1996	1996	2126
Length (with rear linkage) (D)	mm	3442	3442	3442	5373
Front track (min./max.)	mm	1166/1422	1166/1422	1166/1422	1166/1422
Rear track (min./max.)	mm	1091/1491	1091/1491	1091/1491	1091/1491
Max height at ROPS (B)	mm	2319	2319	2319	2319
Height at steering wheel	mm	1430	1430	1430	1430
Height at mudguards	mm	1211	1211	1211	1211
Height at instrument cluster	mm	1387	1387	1387	1387
Weight	kg	2450	2450	2450	2600
Maximum load capacity	kg	4200	4200	4200	4350

●: Standard ○: Optional -: Not available






Dealer

Marketing-Communication Service - Code 308.8564.3.4-3 - 05/16 ciagreen

To discover more contact your dealer or visit [deutz-fahr.com](http://deutz-fahr.com).

DEUTZ-FAHR is a brand of  SDF

